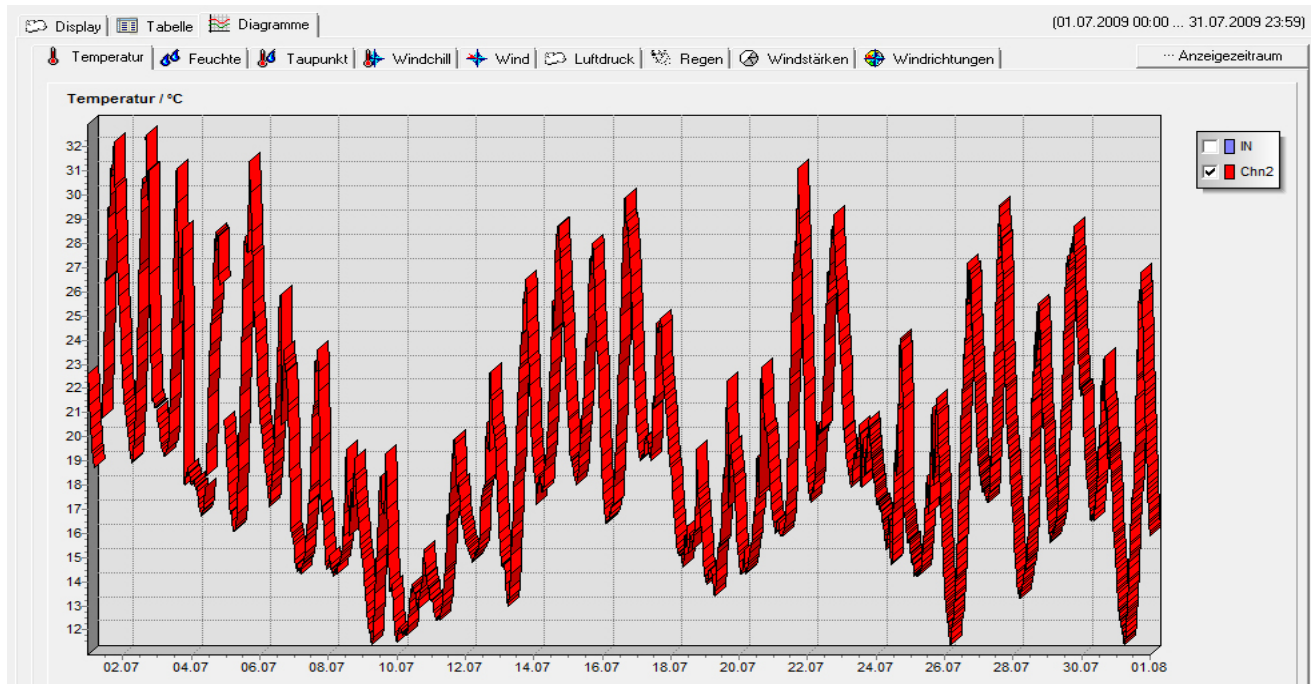
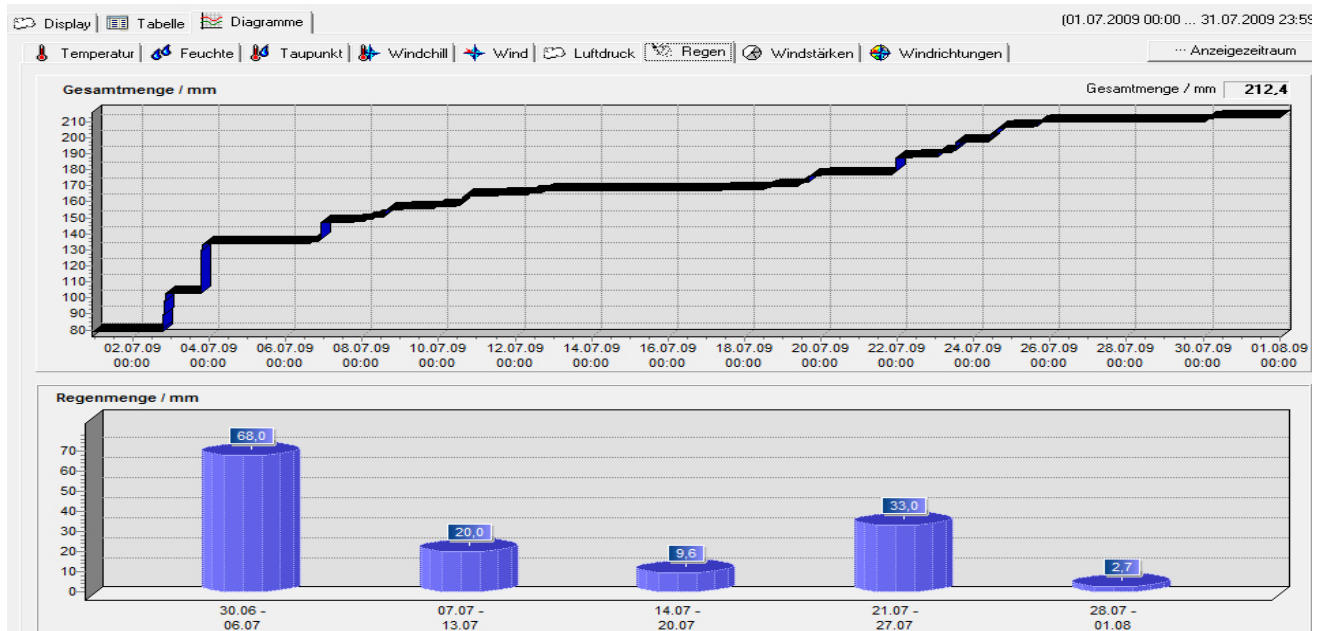


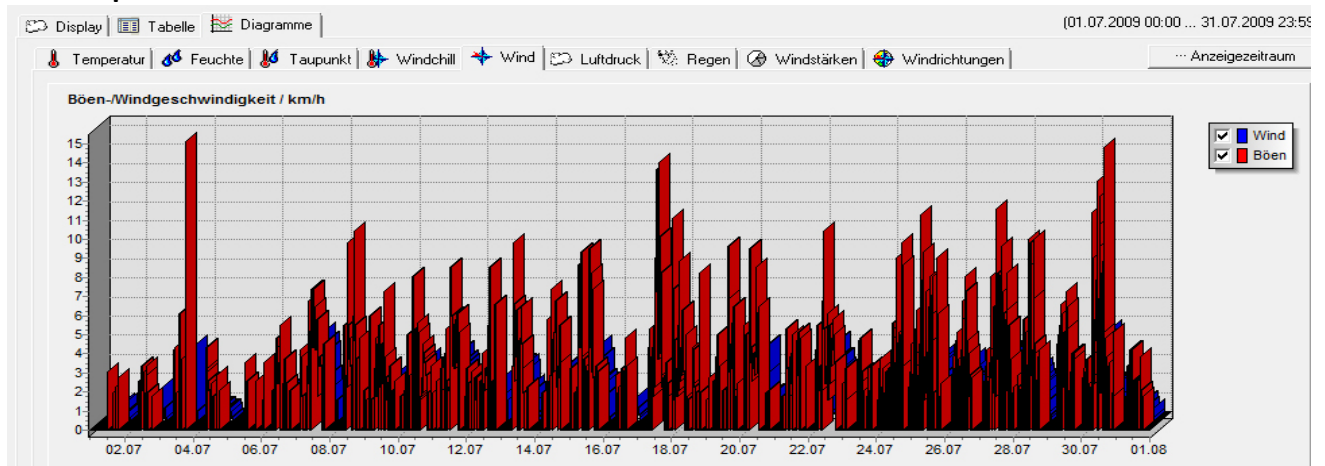
Monatsdiagramme... Juli2009



Messpunkt: 2m über Boden / abgeschattet

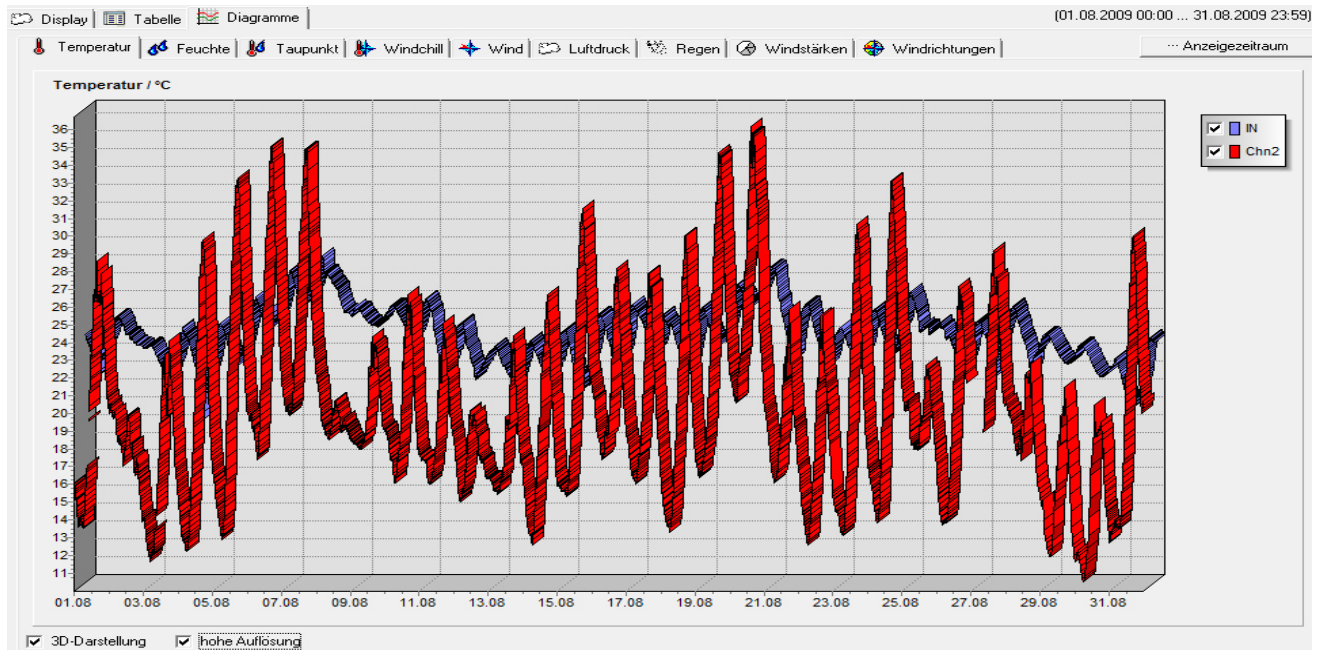


Messpunkt: ca. 1m über Boden

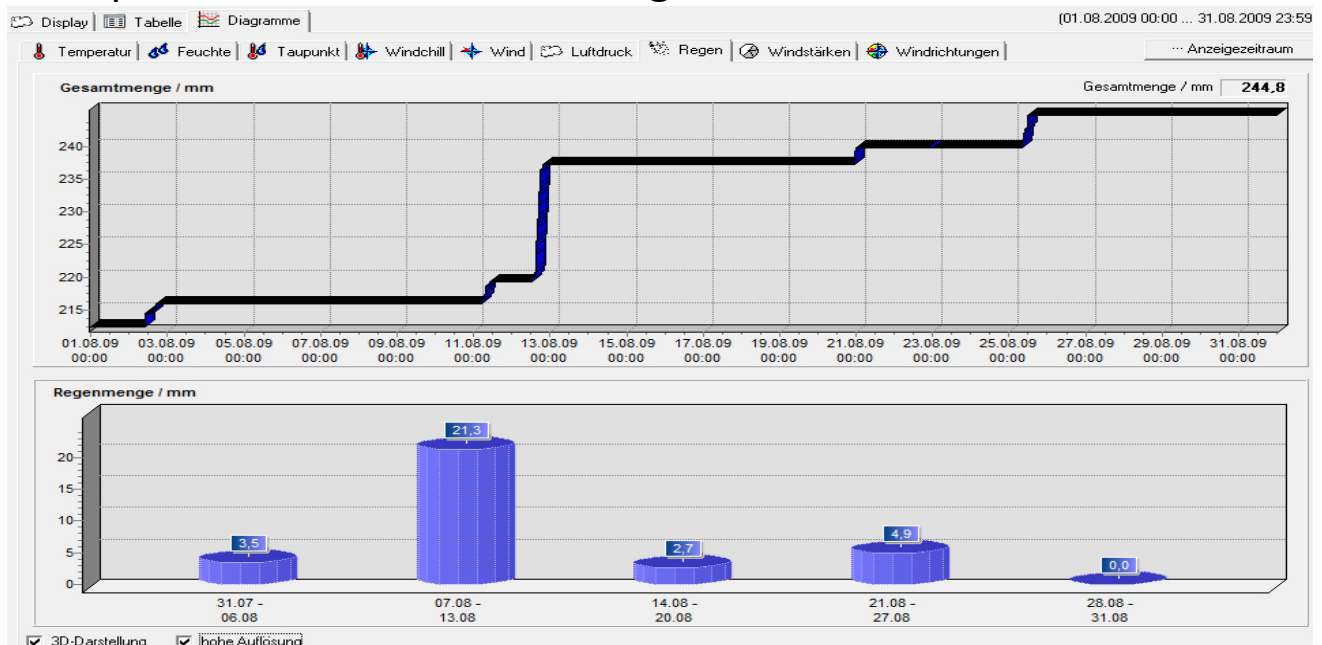


Messpunkt: 2m über Boden

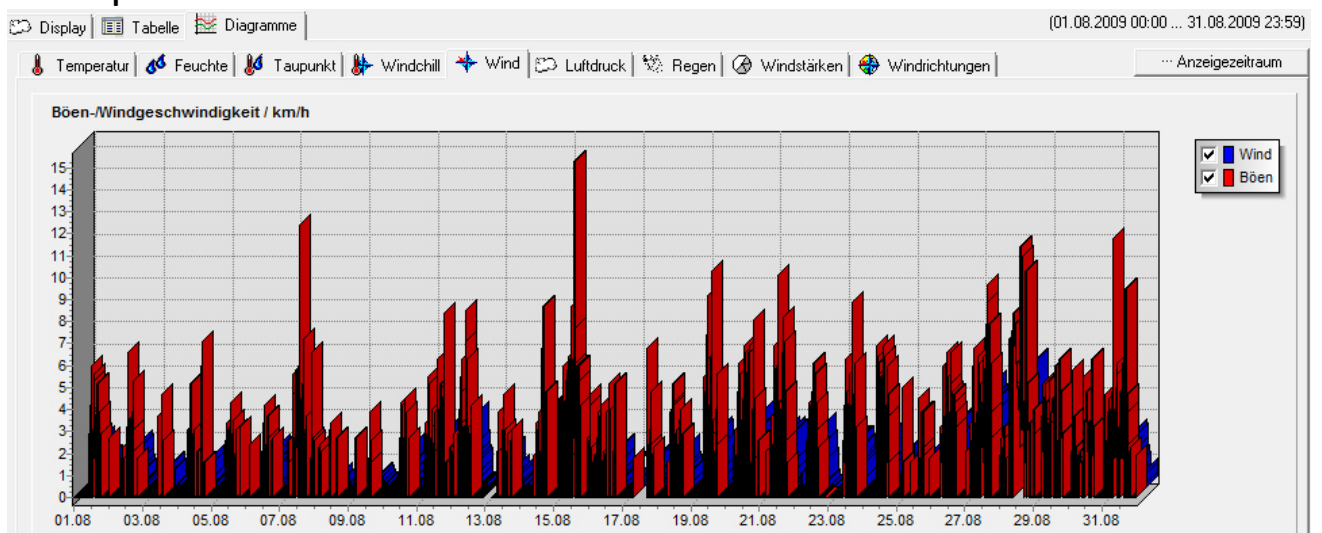
Monatsdiagramme... August2009



Messpunkt: 2m über Boden / abgeschattet

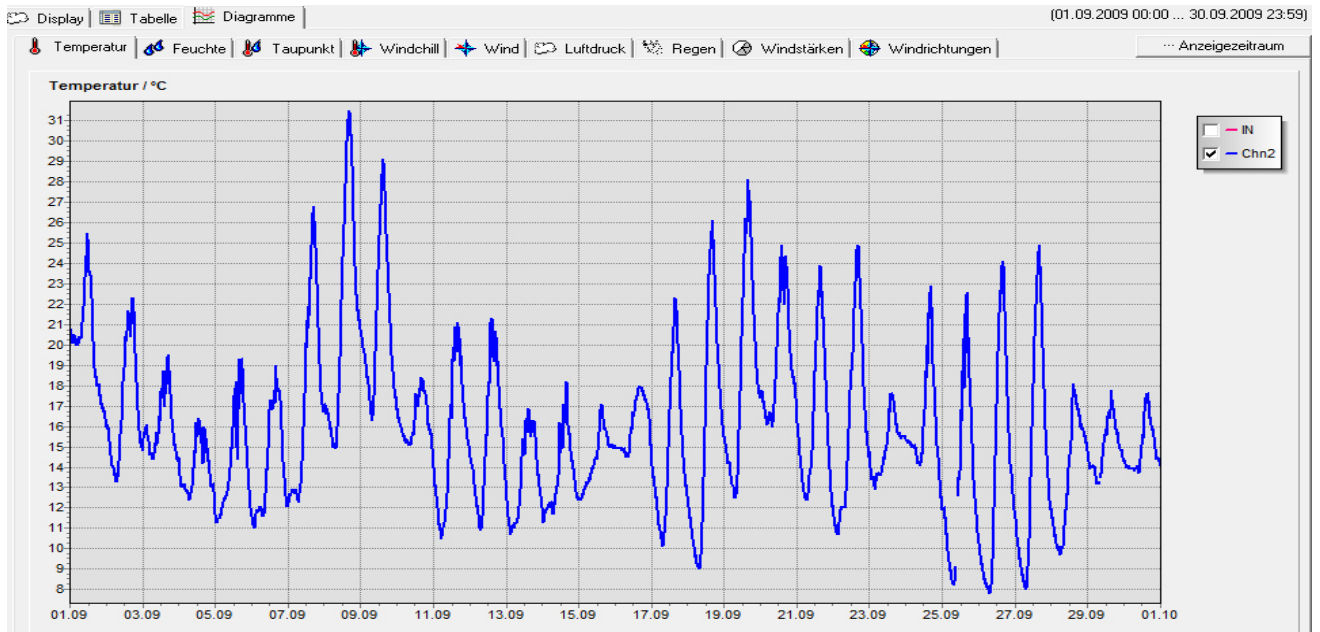


Messpunkt: ca. 1m über Boden

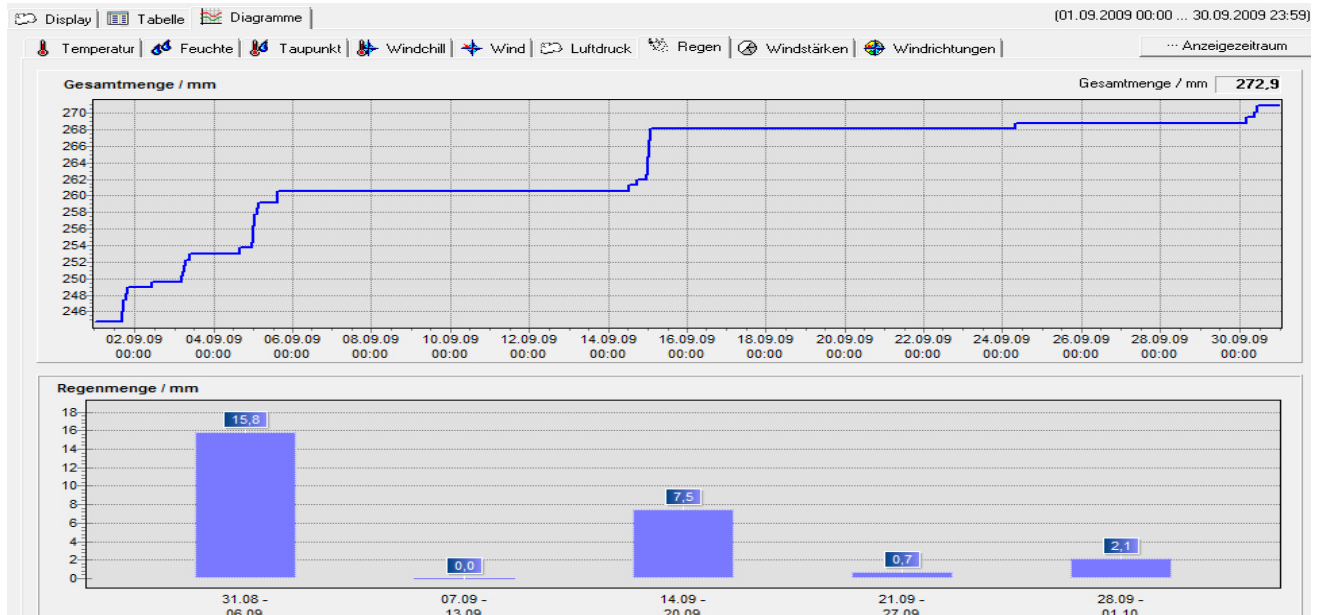


Messpunkt: 2m über Boden

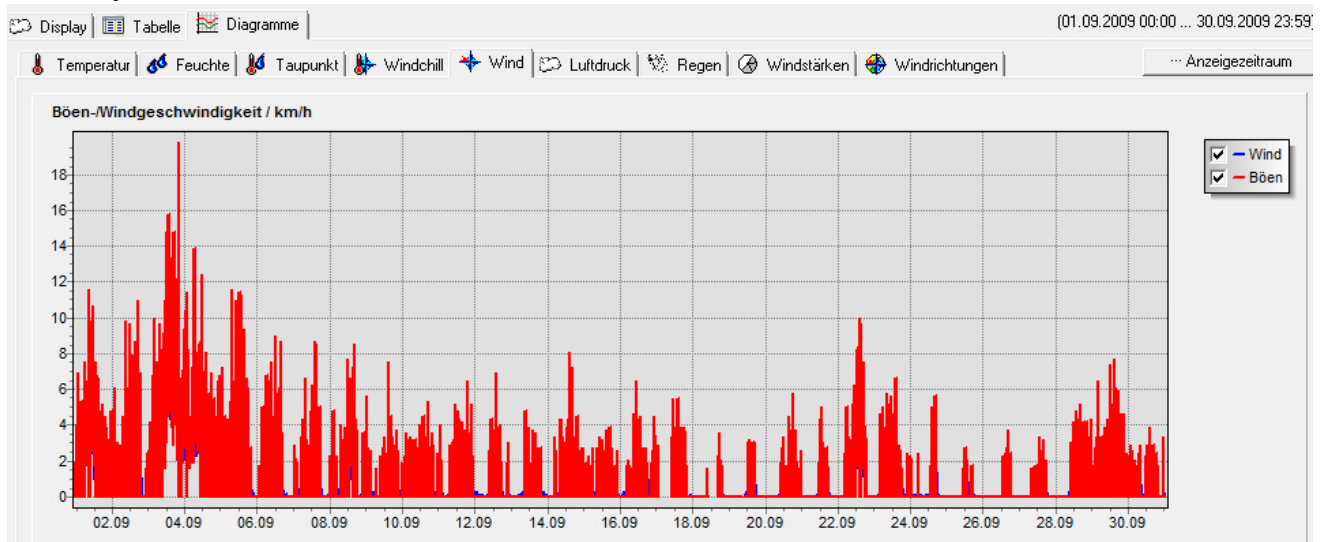
Monatsdiagramme... September2009



Messpunkt: 2m über Boden / abgeschattet

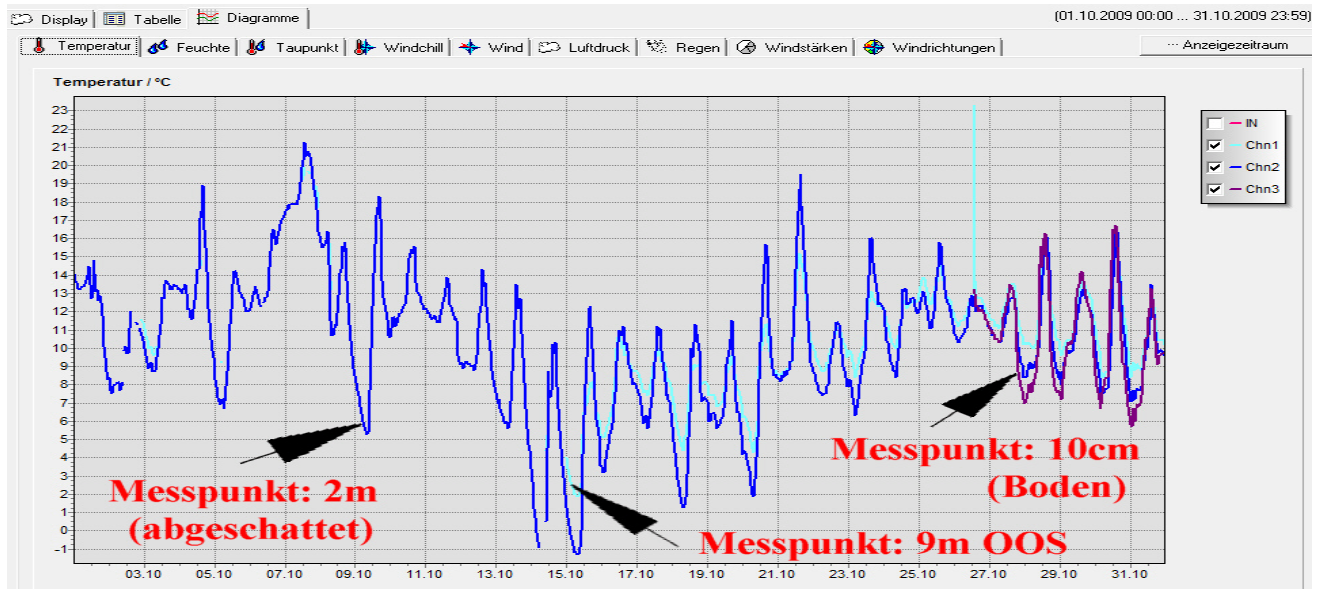


Messpunkt: ca. 1m über Boden

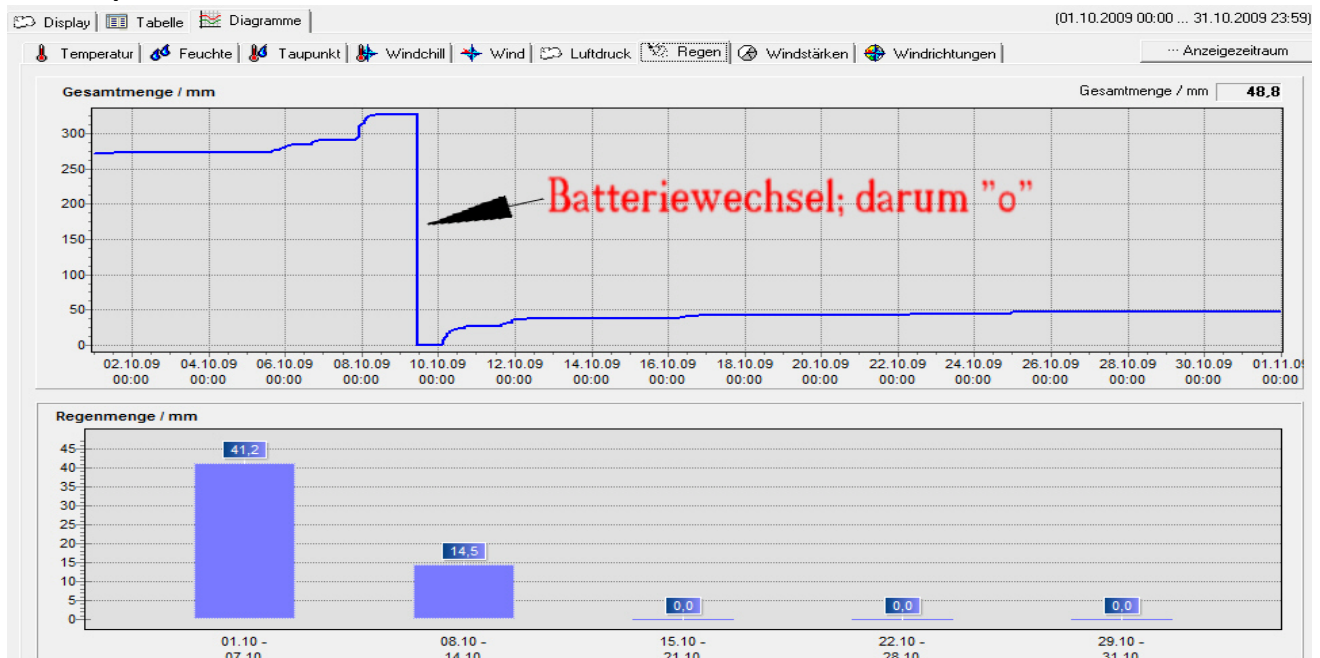


Messpunkt: 2m über Boden

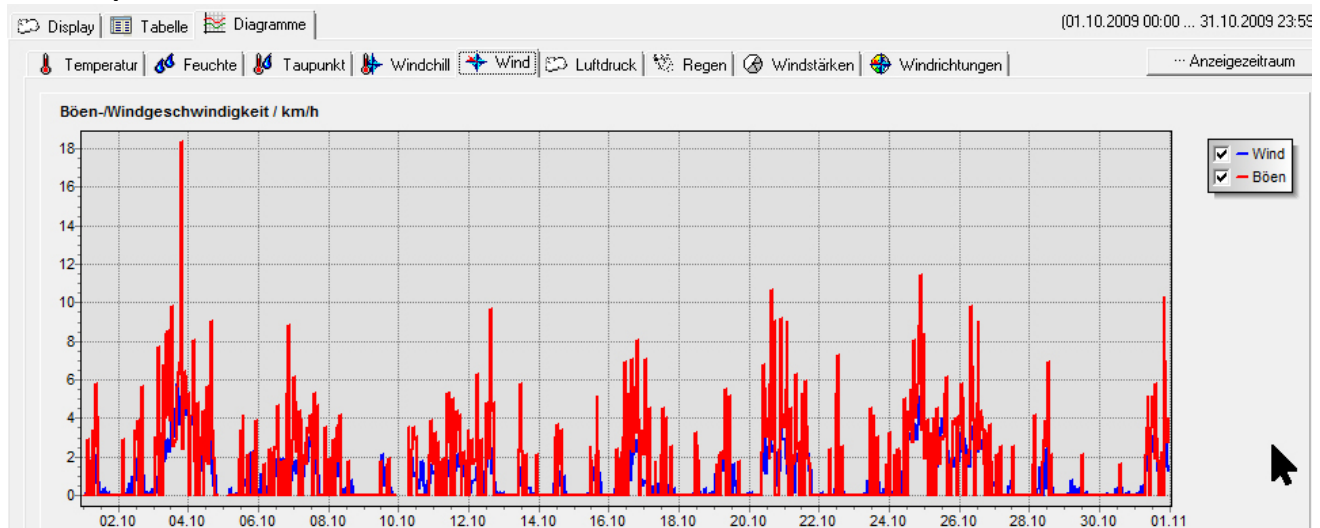
Monatsdiagramme... Oktober2009



Messpunkte: chn1= ca. 9m; chn2= ca. 2m; chn3= 10cm ü. Boden

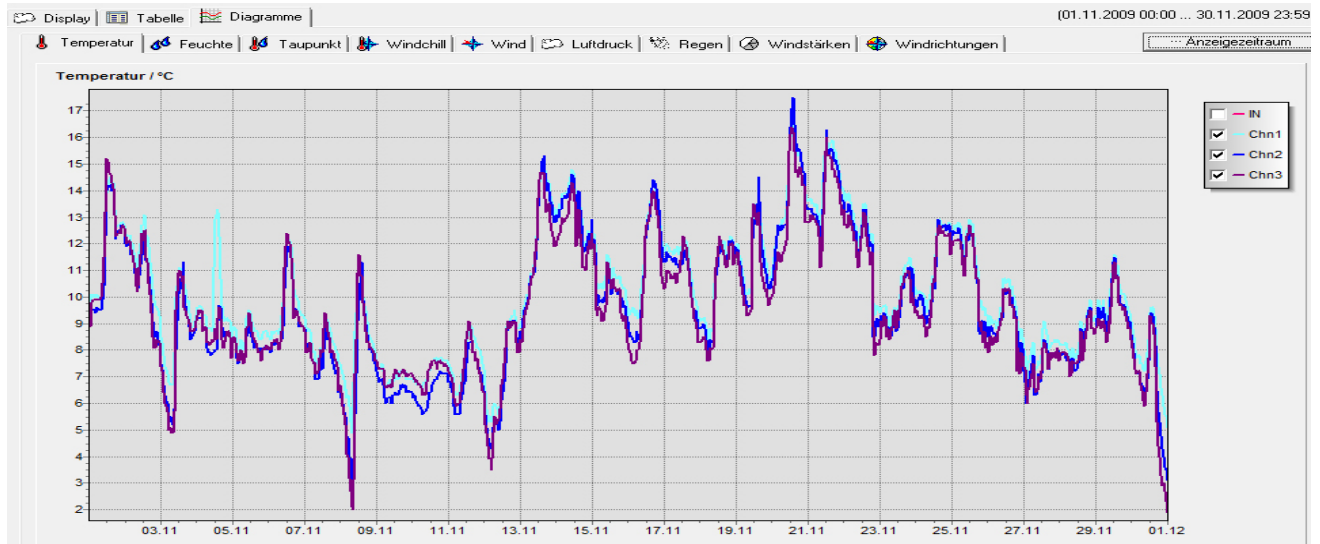


Messpunkt: ca. 1m über Boden

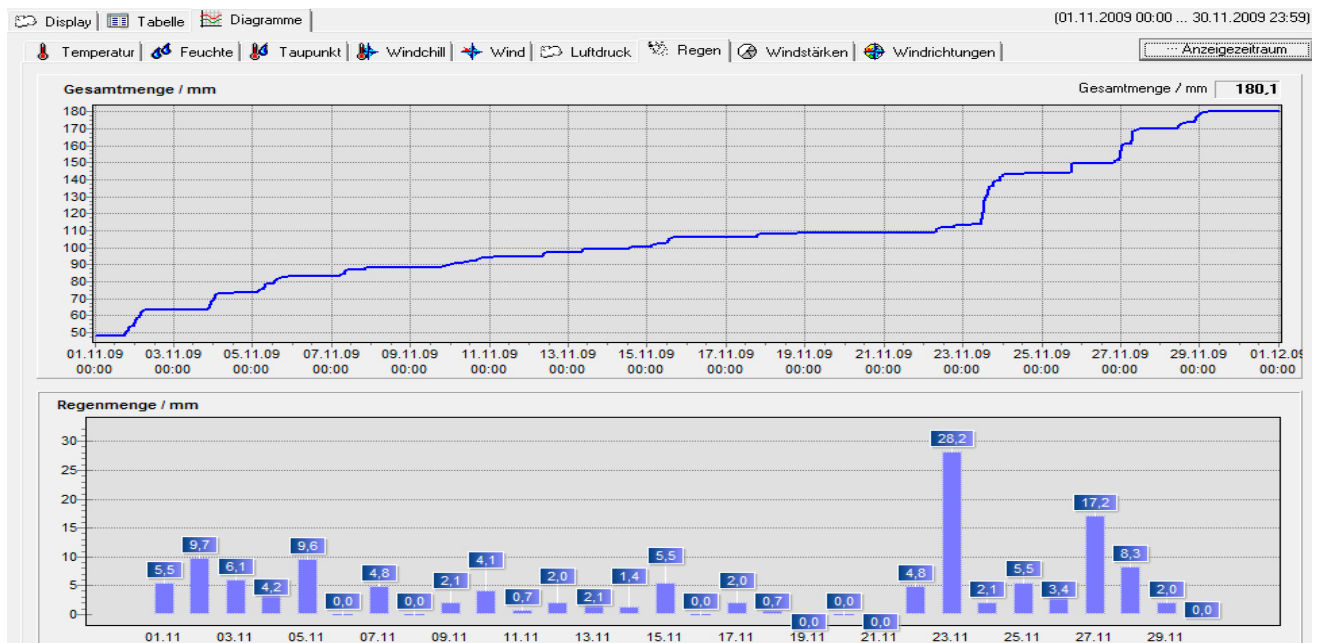


Messpunkt: ca. 2m über Boden

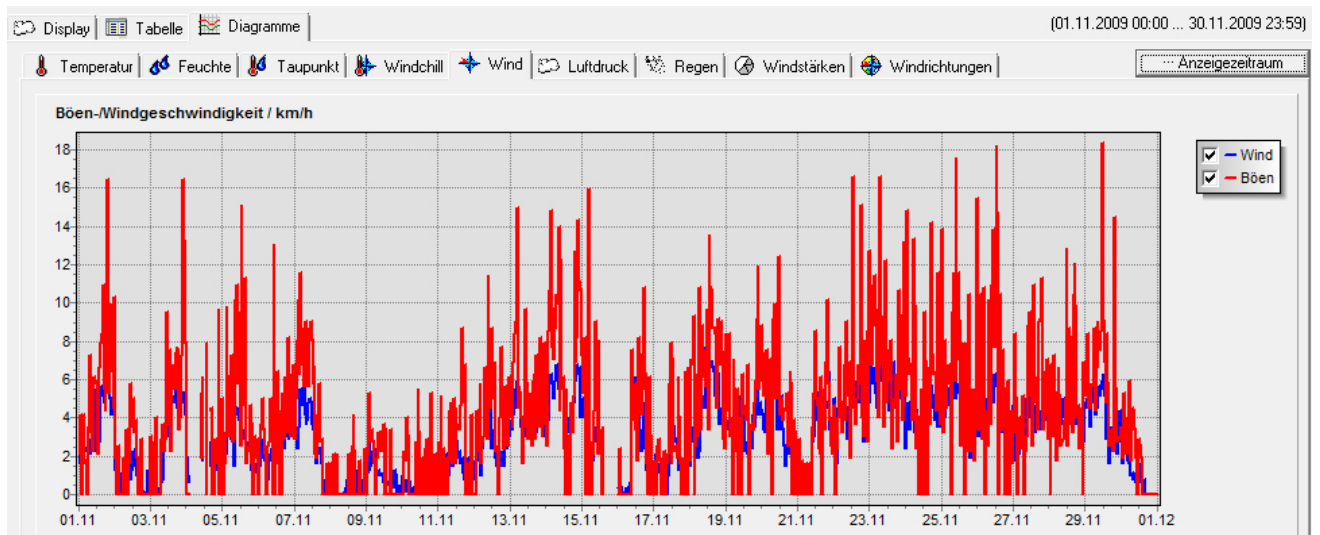
Monatsdiagramme... November2009



Messpunkte: chn1= ca. 9m; chn2= ca. 2m; chn3= 10cm ü. Boden

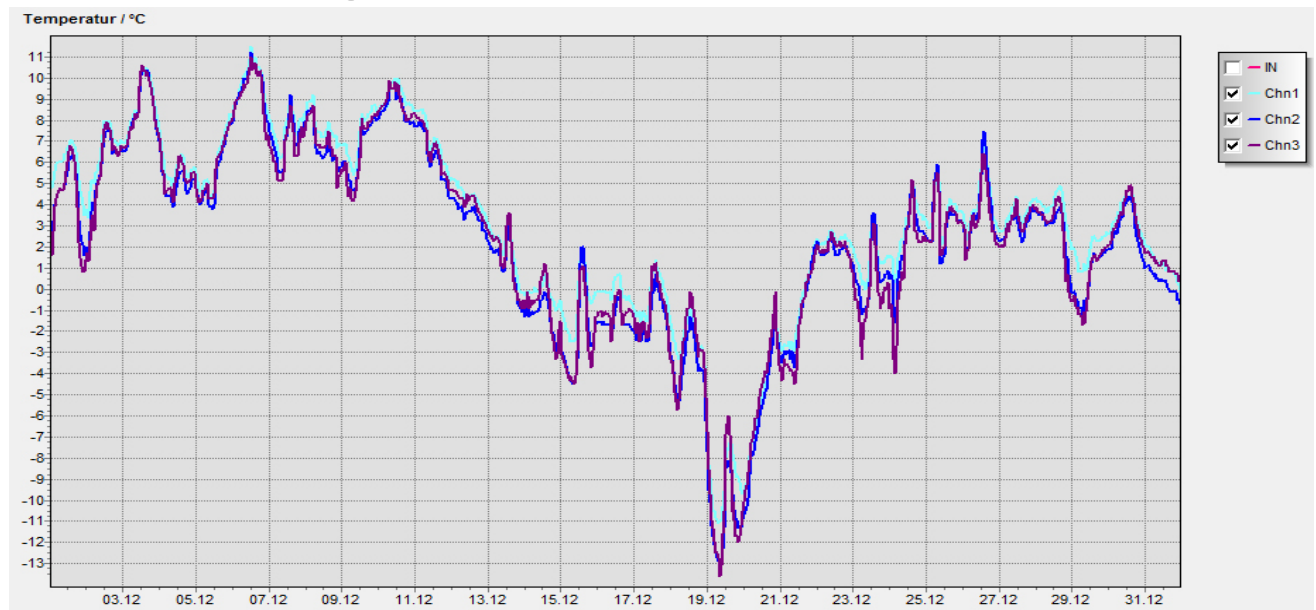


Messpunkt: ca. 1m über Boden

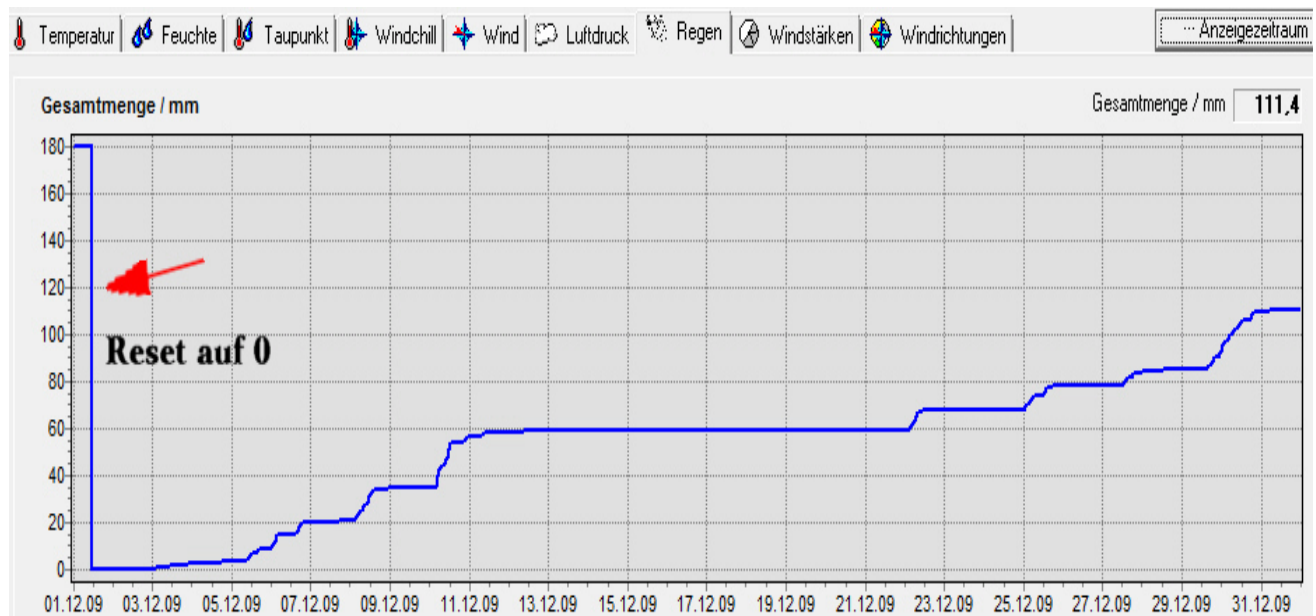


Messpunkt: ca. 2m über Boden

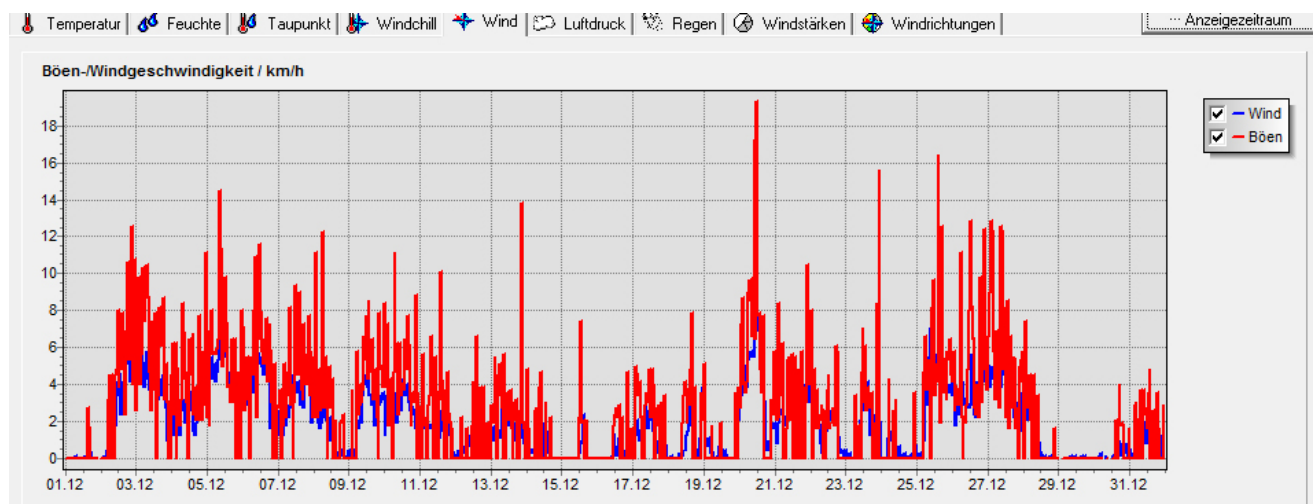
Monatsdiagramme... Dezember 2009



Messpunkte: chn1= ca. 9m; chn2= ca. 2m; chn3= 10cm ü. Boden



Messpunkt: ca. 1m über Boden



Messpunkt: ca. 2m über Boden